

STOW SILO

Saving out the cost of an extra building, the roof and wall cladding are fixed directly onto the rack structure. The racking is not only subject to the loads of the pallets, stacker cranes and conveyors, but also to external forces such as wind and snow. Unsurprisingly, this requires thorough stress calculations from our engineering team, in order to come up with tailor made solutions for every situation. Each particular design is worked on with the type, weight and size of the load kept firmly in mind. Several features, such as longitudinal and horizontal bracings, anchorage systems and high quality sigma beams guarantee the stability of the structure. The walls and roof are reinforced with steel sub structures in the front and rear zone of the stow silo.

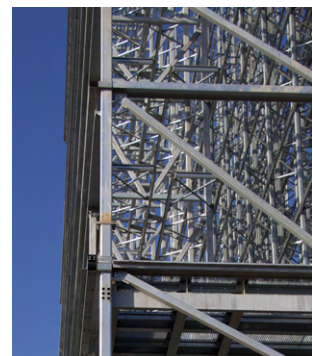
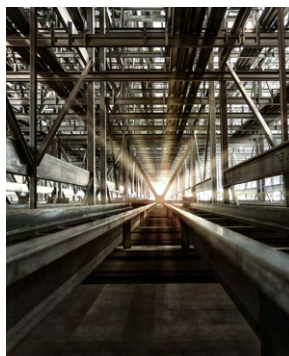
You want to build higher warehouses than your competitors, store heavier goods and benefit from a better performance?

The stow silo racking structure allows for a wide range of possibilities:

- Platforms for maintenance, conveyors, visitors,..
- Stair cases, ladders and towers
- Top guide rails for stacker cranes
- All possible safety equipment, such as fences, doors, handrails

Features:

- A tailor-made solution for every situation
- Roof and wall cladding fixed directly on the rack structure
- Longitudinal and horizontal bracings guarantee stability of the structure
- Cost-efficient solution



(CLEAR BENEFITS FOR EVERY APPLICATION)

- › Complies with the European FEM and EN regulations quality assured to ISO 9001.(BQA N° 019 QMS)
- › Computer aided design ensuring the best solution for every application, including static calculation

- › All components have been thoroughly tested in specialized laboratories.
- › Fully automated production to a high quality standard and in a cost-effective way